


Percents, Decimals and Fractions


Per cent


· for every 100
· out of


$$70\% = \frac{70}{100} = \frac{7}{10} \text{ OR } .70$$


OR .7

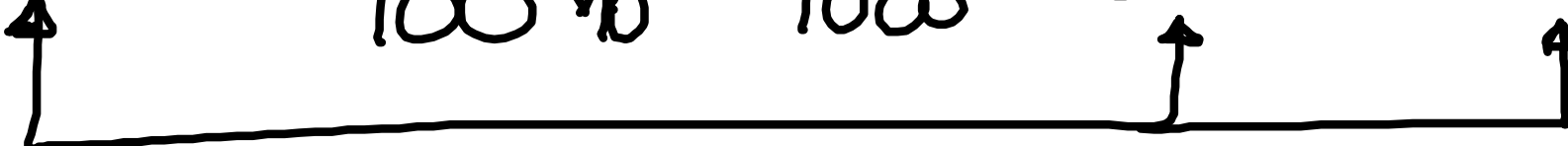
$$35\% = \frac{35}{100} = \frac{7}{20} = .35$$



$$4\% = \frac{4}{100} = \frac{2}{50} = \frac{1}{25} = .04$$


$$100\% = \frac{100}{100} = \frac{9}{1} = 9 = 9$$


$$275\% = \frac{275}{100} = \frac{11}{4} = 2\frac{3}{4} = 2.75$$


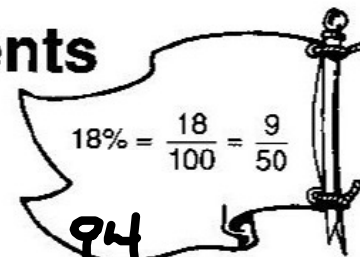
$$130\% = \frac{130}{100} = \frac{13}{10} = 1\frac{3}{10} = 1.3$$


$$.6\% = \frac{.6 \times 10}{100 \times 10} = \frac{6}{1000} = \frac{3}{500} = .006$$


$$.28\% = \frac{.28 \times 100}{100 \times 100} = \frac{28^*}{10000} = \frac{14}{5000} = \frac{7}{2500} = .0028$$


Making Fractions From Percents

Write each percent below as a fraction with a denominator of 100. Then write the fraction in its simplest form.



A. 49% = $\frac{49}{100}$

75% = $\frac{75}{100} = \frac{3}{4}$

94% = $\frac{94}{100} = \frac{47}{50}$

B. 65% = $\frac{65}{100} = \frac{13}{20}$

17% = $\frac{17}{100}$

2% = $\frac{2}{100} = \frac{1}{50}$

C. 100% = $\frac{100}{100} = 1$

6% = $\frac{6}{100} = \frac{3}{50}$

56% = $\frac{56}{100} = \frac{28}{50} = \frac{14}{25}$

D. 8% = $\frac{8}{100} = \frac{4}{50} = \frac{2}{25}$

80% = $\frac{80}{100} = \frac{8}{10} = \frac{4}{5}$

99% = $\frac{99}{100}$

E. 30% = $\frac{30}{100} = \frac{3}{10}$

28% = $\frac{28}{100} = \frac{7}{25}$

73% = $\frac{73}{100}$

F. $.25 = \frac{1}{4}$
 $25\% = \frac{1}{4}$

$.93 = \frac{93}{100}$
 $93\% = \frac{93}{100}$

$.1 = \frac{1}{10}$
 $10\% = \frac{1}{10}$

G. $.05 = \frac{5}{100} = \frac{1}{20}$
 $5\% = \frac{5}{100} = \frac{1}{20}$

$.04 = \frac{4}{100} = \frac{1}{25}$
 $4\% = \frac{4}{100} = \frac{1}{25}$

$.95 = \frac{95}{100} = \frac{19}{20}$
 $95\% = \frac{95}{100} = \frac{19}{20}$

H. $.07 = \frac{7}{100}$
 $7\% = \frac{7}{100}$

$.4 = \frac{40}{100} = \frac{2}{5}$
 $40\% = \frac{40}{100} = \frac{2}{5}$

$.5 = \frac{50}{100} = \frac{1}{2}$
 $50\% = \frac{50}{100} = \frac{1}{2}$

I. $.9 = \frac{90}{100} = \frac{9}{10}$
 $90\% = \frac{90}{100} = \frac{9}{10}$

$.03 = \frac{3}{100}$
 $3\% = \frac{3}{100}$

$.62 = \frac{62}{100} = \frac{31}{50}$
 $62\% = \frac{62}{100} = \frac{31}{50}$

J. $.6 = \frac{60}{100} = \frac{6}{10} = \frac{3}{5}$
 $60\% = \frac{60}{100} = \frac{6}{10} = \frac{3}{5}$

$.85 = \frac{85}{100} = \frac{17}{20}$
 $85\% = \frac{85}{100} = \frac{17}{20}$

$.48 = \frac{48}{100} = \frac{24}{50} = \frac{12}{25}$
 $48\% = \frac{48}{100} = \frac{24}{50} = \frac{12}{25}$

K. $.01 = \frac{1}{100}$
 $1\% = \frac{1}{100}$

$.46 = \frac{46}{100} = \frac{23}{50}$
 $46\% = \frac{46}{100} = \frac{23}{50}$

$.45 = \frac{45}{100} = \frac{9}{20}$
 $45\% = \frac{45}{100} = \frac{9}{20}$