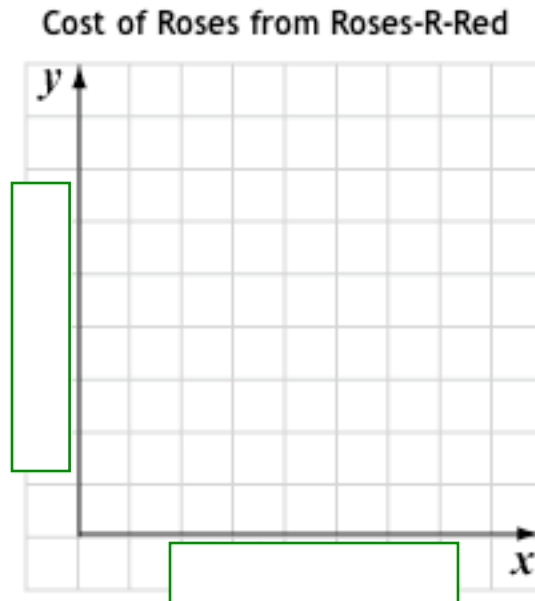


Functions

Student Activity Sheet 4; use with *Exploring “Graphs”*

1. Label the axes of this graph.



2. Use the next questions to continue to analyze the flower companies' offers.
- What values make sense for the number of roses the soccer team can order from Roses-R-Red? What values make sense for the cost of the roses?

 - What values make sense for the number of roses the soccer team can order from Flower Power? What values make sense for the cost of the roses?

Functions

Student Activity Sheet 4; use with *Exploring “Graphs”*

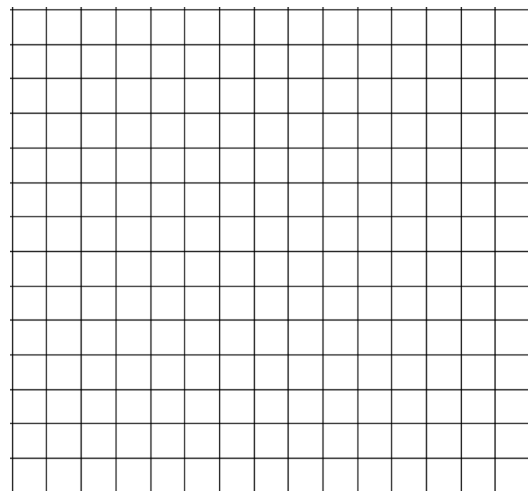
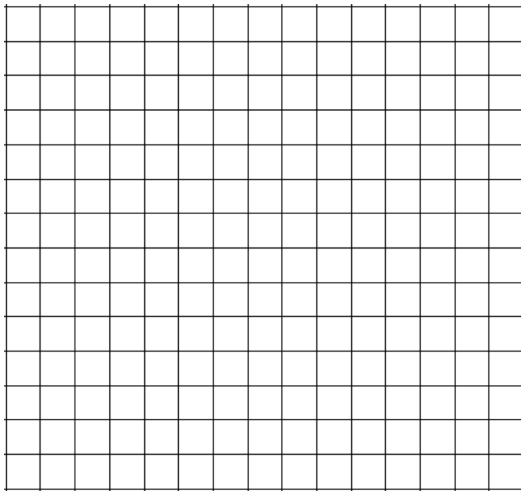
3. Use the data in the soccer team’s tables to graph the Roses-R-Red and Flower Power data.

**Cost of Roses from
Roses-R-Red**

Number ordered	Cost in dollars
12	29.00
24	38.00
36	47.00
32	44.00
23	37.25

**Cost of Roses from
Flower Power**

Number ordered	Cost in dollars
12	66.00
24	72.00
36	78.00
32	76.00
43	81.50



4. Draw a line through the plotted points on your two graphs.

Functions

Student Activity Sheet 4; use with *Exploring “Graphs”*

Complete statements 5-8 to compare your graphs of the flower companies' costs. Use the answer choices provided.

rising	falling	lower	higher	increases	decreases
--------	---------	-------	--------	-----------	-----------

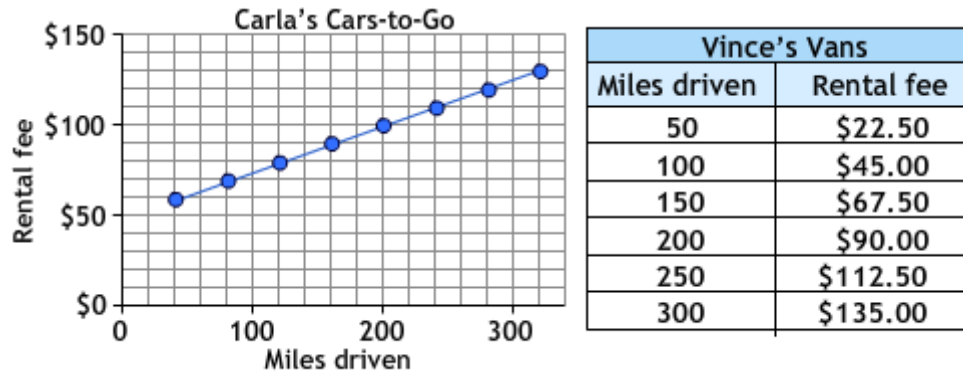
- On both graphs, the plotted points fall in a line that is _____ from left to right.
- The shapes of both graphs show a steady increase in the cost of the roses, as the number of roses ordered _____.
- The Roses-R-Red line starts _____ but is steeper.
- Compared with the Flower Power graph, this shape means that the service charge for the Roses-R-Red flowers is _____ but the charge per rose is _____.

Continue your analysis of the graphs by filling in the blanks in statements 9-15.

- The Roses-R-Red line intersects the y -axis at the point _____.
- The Flower Power line intersects the y -axis at the point _____.
- These data points on the y -axis represent the cost of the _____ for each flower company.
- If the soccer team orders 45 roses from Roses-R-Red, they will pay about \$_____.
- If the soccer team orders 45 roses from Flower Power, they will pay about \$_____.
- From Roses-R-Red, the soccer team can get about _____ roses for \$70.
- From Flower Power, the soccer team can get about _____ roses for \$70.

Functions

Student Activity Sheet 4; use with *Exploring "Graphs"*

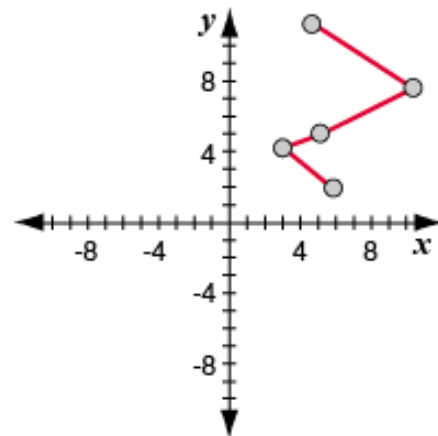
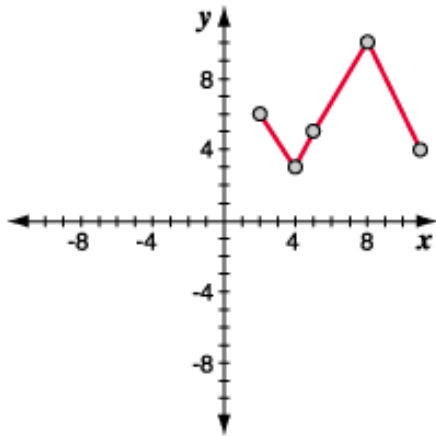


Vince's Vans	
Miles driven	Rental fee
50	\$22.50
100	\$45.00
150	\$67.50
200	\$90.00
250	\$112.50
300	\$135.00

16. Which van rental company begins to charge you money as soon as you rent the van (before you ever drive a single mile)? How do you know?

Functions

Student Activity Sheet 4; use with *Exploring "Graphs"*



17. Consider these two graphs. Does each represent a function? Why or why not?

Functions

Student Activity Sheet 4; use with *Exploring “Graphs”*

18. **LITERACY TASK** Which flower company should the soccer team use? After analyzing the offers from the two flower companies, write a memo answering the question, in which you justify your recommendation using evidence from the tables and graphs of each offer.

The online retailer We-stock-it.com posts its charges for shipping and handling prominently on its website. Customers are charged \$1.50 per pound for shipping and a flat fee of \$5.00 for handling for each package.

We-stock-it.com’s main competitor is Discountstore.com. Discountstore.com has made it very difficult for its customers to find shipping and handling fees on its website. A group of customers posted the data in this table relating package weights and shipping and handling fees for items they ordered from Discountstore.com. Use this information to answer questions 19-22.

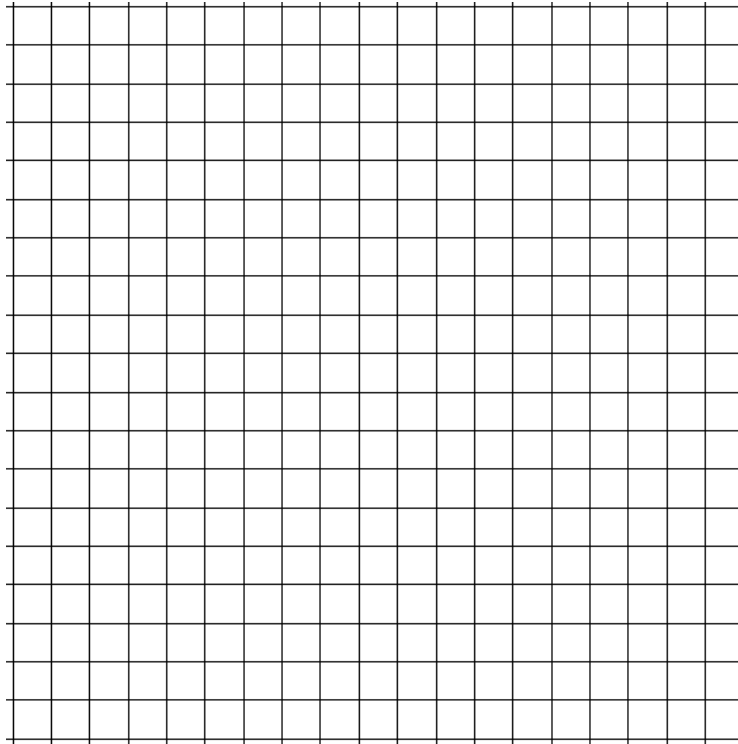
Package weight (in pounds)	Shipping and handling cost (in dollars)
3	9.25
5	12.75
12	25.00
18	35.50
20	39.00

19. **REINFORCE** If you made a graph of each retailers’ shipping and handling costs, which variable would you graph along the x-axis? Which variable would you graph along the y-axis? Why?

Functions

Student Activity Sheet 4; use with *Exploring “Graphs”*

20. **REINFORCE** Make a graph of Discountstore.com’s shipping and handling data. Then, draw a line through the data points.



21. **REINFORCE** Does Discountstore.com only charge by the pound for the package or do they charge a flat fee like We-stock-it.com? How do you know?

22. **REINFORCE** A case of printer paper weighs 28 pounds. How much would each retailer charge for shipping and handling on a case of printer paper?