



Information for WMS Students & Parents

Find a location in your home where you can hear and see instruction and are set up for success.

- **Use of headphones is recommended**
- **Have a pen, pencil and paper handy during instruction**
- **If there are multiple WPS students, pick your own private space so you can stay focused**



WMS DISTANCE LEARNING SCHEDULE

Students will follow their daily schedule with the exception of Monday March 23, 2020.

- **Yes, you will have to wake up to be logged into your chromebook and homeroom between 8:00 and 8:15.**
- **Attendance will be taken in homeroom Google classroom daily.**



Attendance

Teachers will also take daily attendance based on participation each block.

Attendance is being recorded in the same manner as a regular school day.

- ▷ **Be on time**
- ▷ **Be in full attendance**
- ▷ **Communicate with your teacher if you have questions or trouble**

Students who are sick should rejoin classes when they are well.

Parents can note a student absence by calling our attendance line. 401-315-1692



Your teacher will give instructions via Google Meet and will share assignments on the Google Classroom

- It is sometimes difficult to pay attention virtually but this is an essential piece of the online learning process.
- Please be respectful during this time so all students in the class can fully understand expectations.
- Behavior norms are the same as when we are in school.



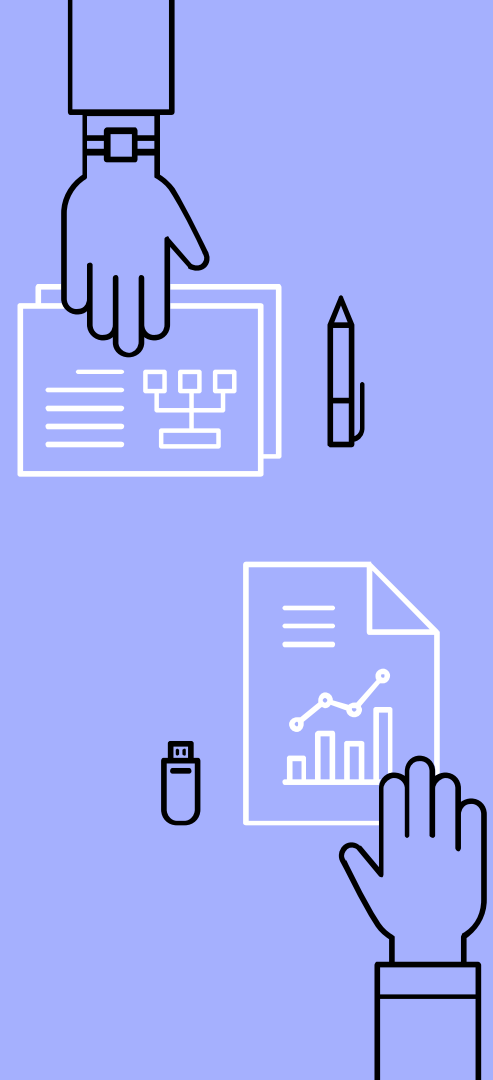
Teachers will “dismiss” you to complete work at some point during the class.

- **Teachers will remain available for the duration of class to support you.**
- **You are not required to stay on Google Meet the entire class if you have been dismissed.**
- **You are responsible for the work assigned.**



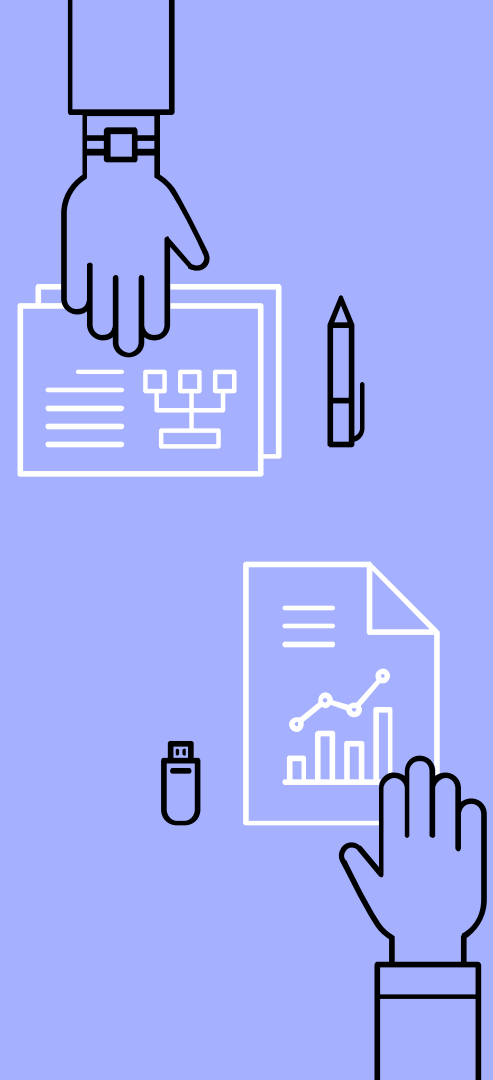
Online etiquette:

- **Leave the keyboard alone**
 - **No chatting with others**
- **Dress appropriately**
- **Be aware of your surroundings**
 - **Create a professional space to work**
- **Mute your microphone when you are not talking**
- **Speak up when appropriate**
- **No food during online time**
- **Stay seated and stay present**



Be Patient

- ▶ **This process will have its hangups. If technology fails or if you are unable to log in, please email your teacher directly.**
- ▶ **Students will be responsible for the assignments and we hope to alleviate as much “make up” work as possible, so your presence in real time is critical.**
- ▶ **In addition to lunch, consider some healthy activity from 11:15am-12:15pm. Ride your bike, go for a walk, but remember to keep to the “social distancing” guidelines.**



Tech FAQs

- ▶ **Can I use an iPad or other device?**
 - **Yes, as long as you can log into the link, an iPad or other device will be fine**
- ▶ **Do I need to have a camera on my device?**
 - **A camera is not necessary but is helpful to humanize our interactions**
- ▶ **Could I log into the Google Meet portion on my phone?**
 - **Yes, if you have internet access on your phone, you can view the online instruction**



Tech Help

Curriculum/Google Classroom Questions:

Desiree Derix, Assistant Principal of
Teaching and Learning

dlderix@westerly.k12.ri.us

401-315-1662

